

How to connect WiFi with smart phone-1

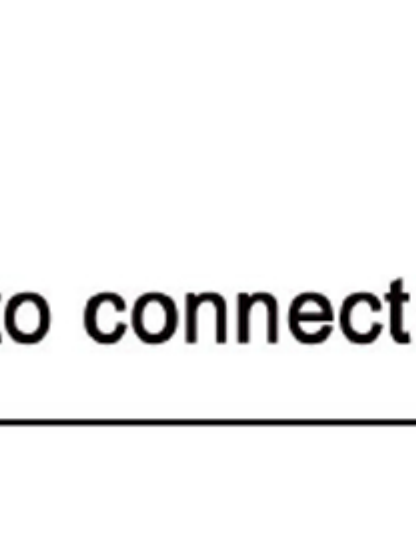
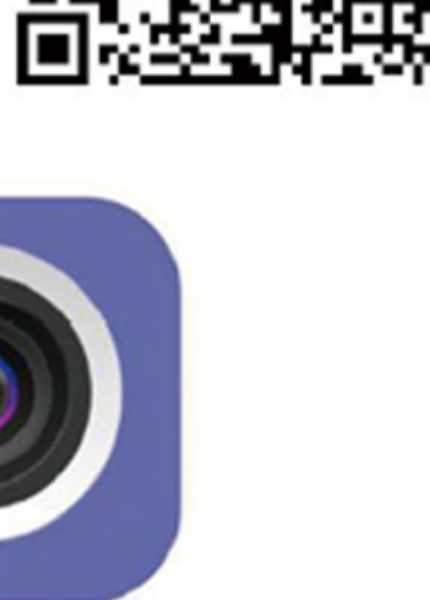
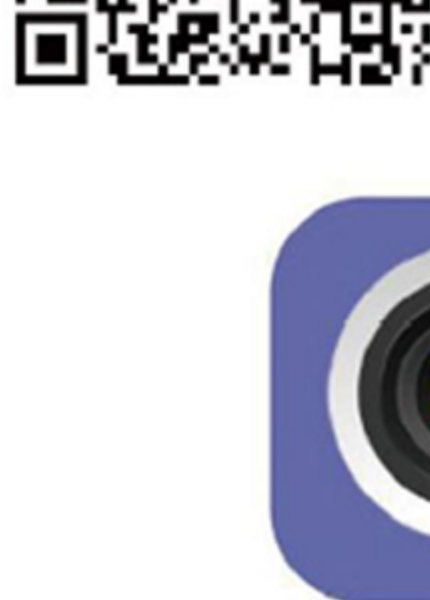
1.Search the “Camhi” in google market via Android mobile phone or in Apple market via iPhone to download app.

Or: Scan the QR code below with mobile phone to download app. The software is free permanently.

Please scan the QR code:

IOS

Android



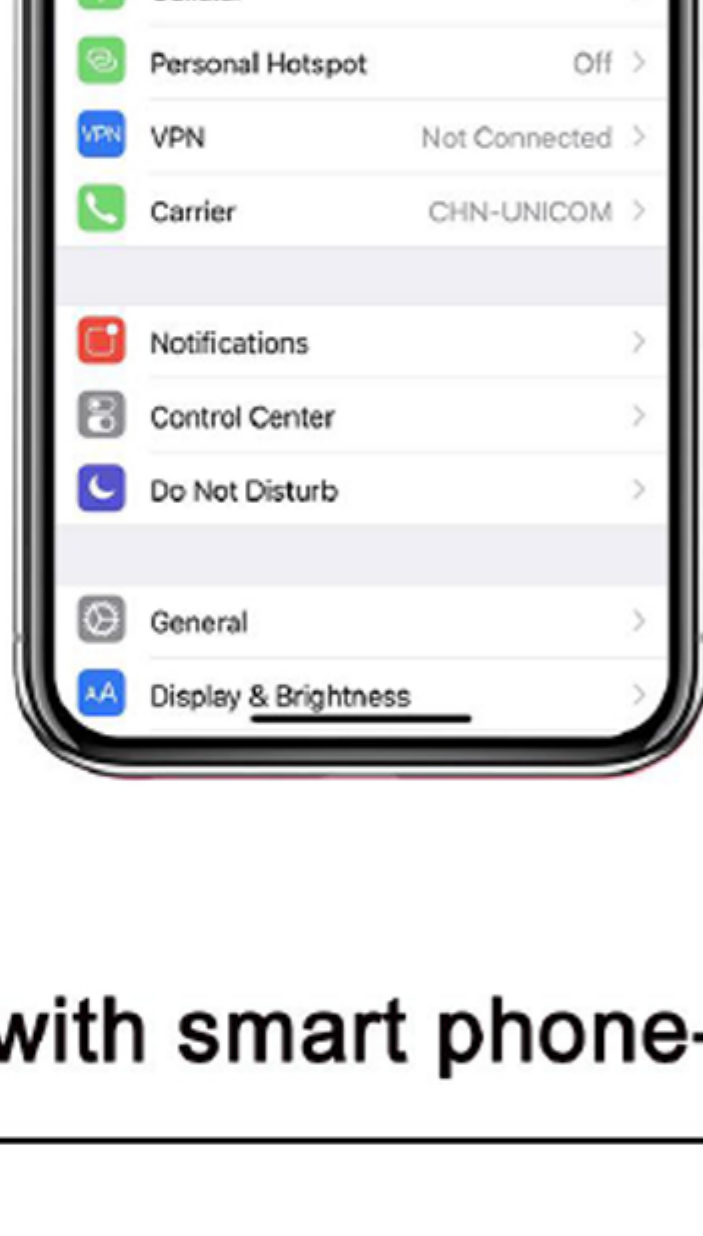
CamHi



How to connect WiFi with smart phone-2

1. Go to Settings - enter Wi-Fi

2 Enter the Wi-Fi option



How to connect WiFi with smart phone-3

1.Connect hotspot

Find the hotspot(camera's wifi signal):

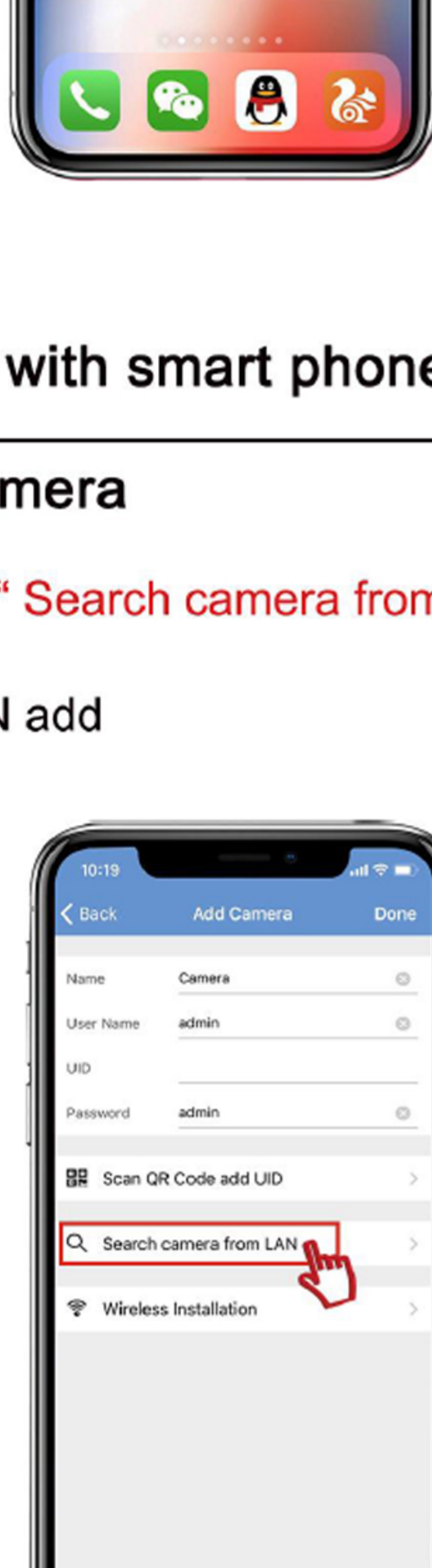
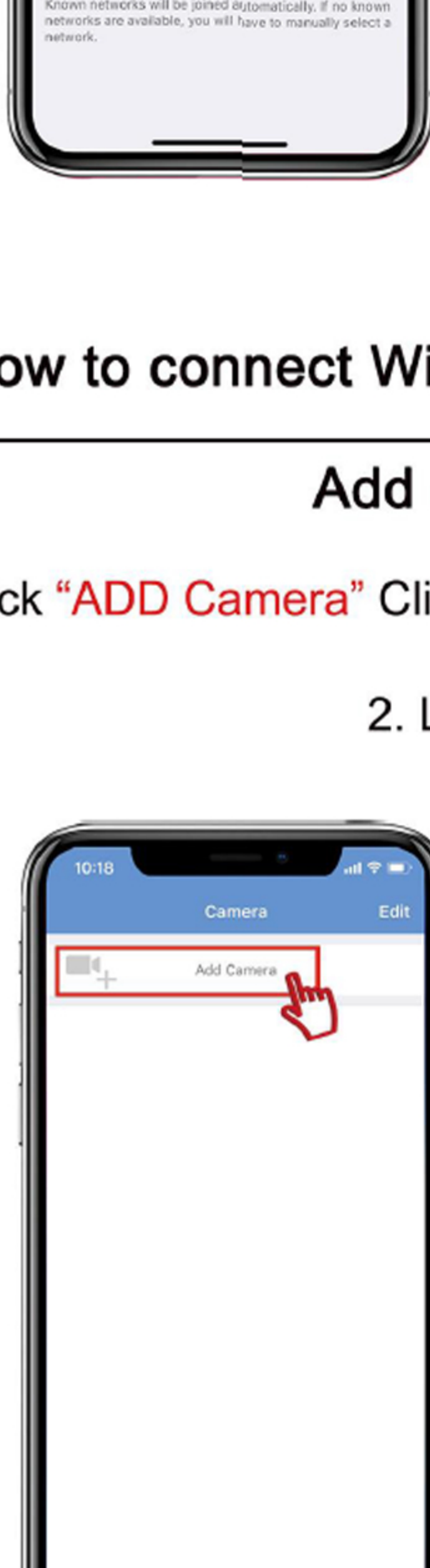
IPCAM-XXX in Wi-Fi setting of mobile phone.

Connect to the hotspot(Password: 01234567)

(Reset if find no hotspot: hold the Reset Button for 7-8 seconds)

2.When hotspot connected, open "Camhi"

Notes:Hotspot only support 3G/4G mobilephone



How to connect WiFi with smart phone-4

Add camera

1,Click “ADD Camera” Click “ Search camera from LAN”

2. LAN add

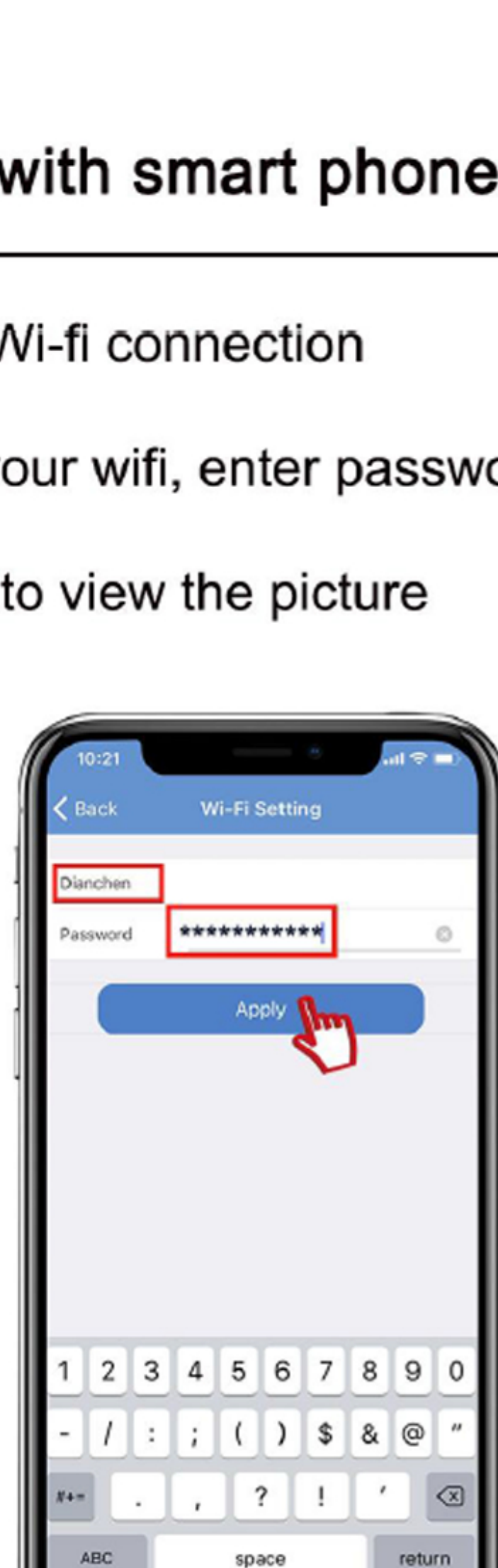
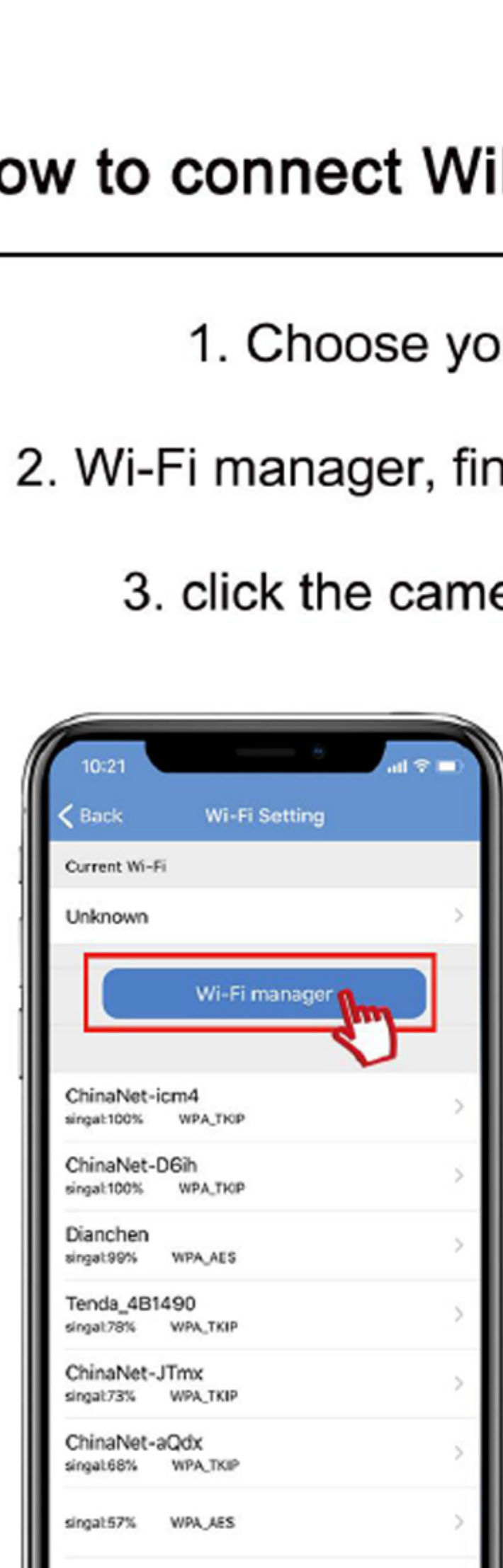


How to connect WiFi with smart phone-5

Add the camera to the network

1. Select UID

2. Enter password. (Password: admin)

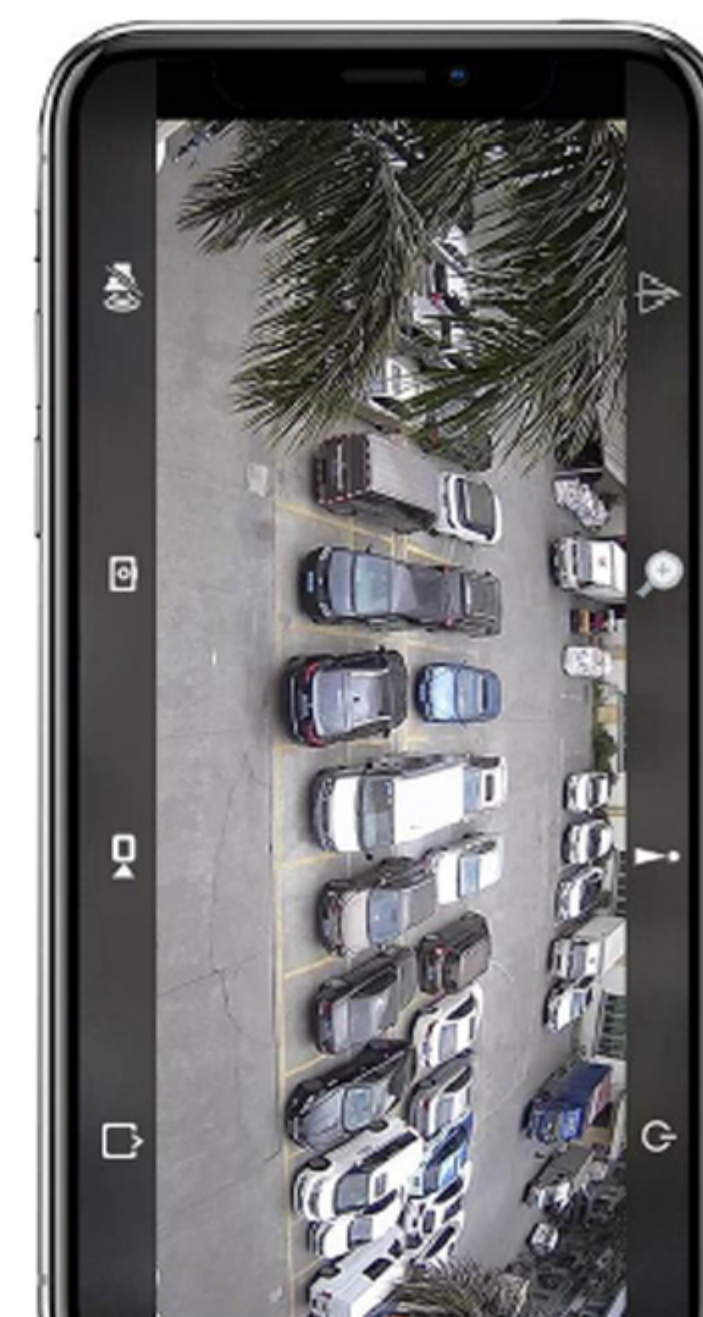
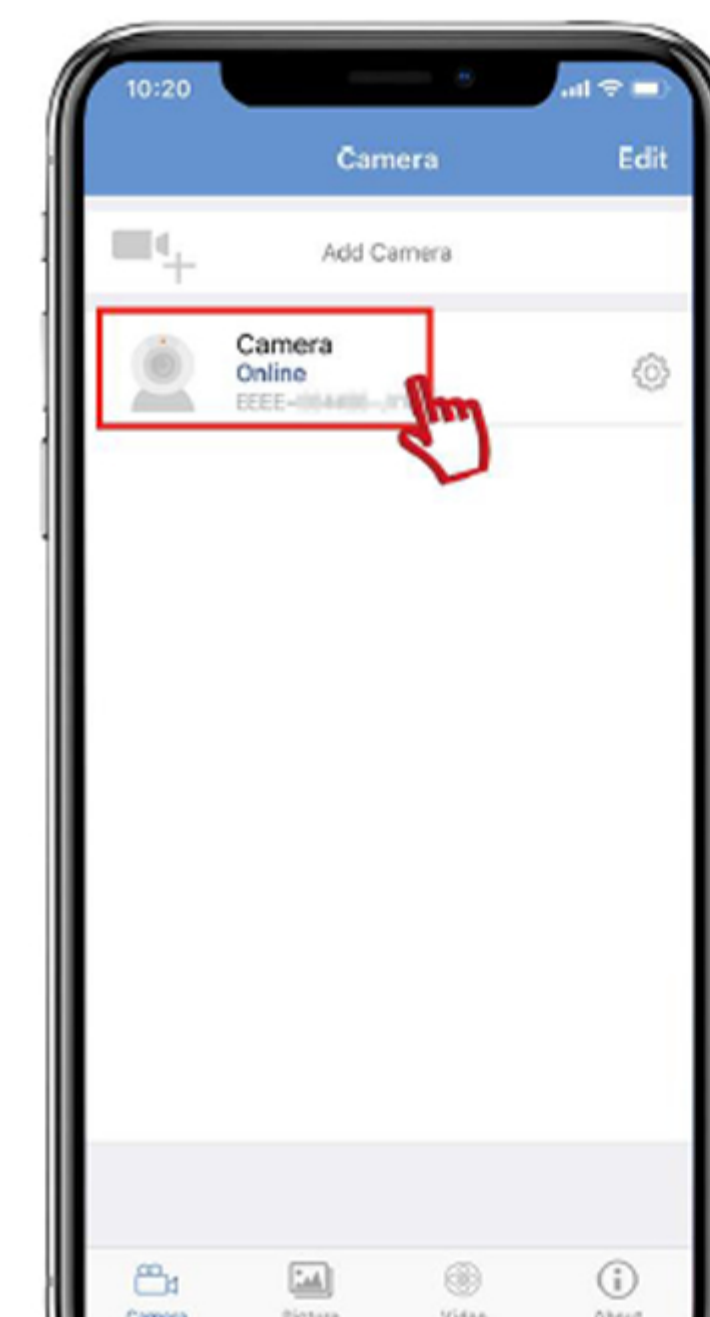


How to connect WiFi with smart phone-6

1. Click⚙️ and connect WiFi

2. Click setting ⚙️

3.Wi-Fi Setting, find your wifi, enter password



How to connect WiFi with smart phone-7

1. Choose your Wi-fi connection

2. Wi-Fi manager, find your wifi, enter password

3. click the camera to view the picture

How to connect WiFi with smart phone-8

Camera works in WiFi condition

After connecting the external network,

the camera will display on your mobilephone

double-click the picture to view the video

